

KIVU®



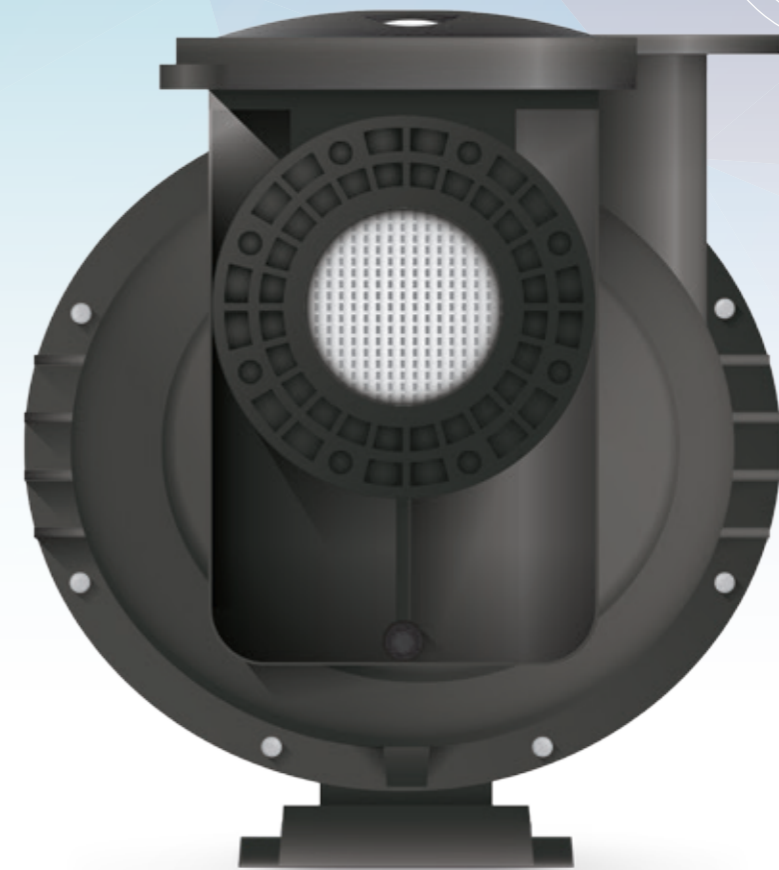
the most efficient plastic filter pump  
in the market

# Why choose Kivu?

The KIVU® range has been designed to deliver top efficiency while it is working and run almost silently. KIVU® is without a doubt the most efficient plastic pump in the market.



Plastic impeller.



## Features

- Plastic 1,500 rpm pump.
- High hydraulic efficiency of up to 85%.
- Low sound levels of up to 66 dBA.
- Equipped with high performance IE3 motors (compliant with regulation EU 640/2009).
- Standard motor shaft, compatible with all motors in the market.
- IEC-compliant motor with a flange-mounted B5 aluminium motor.
- Separate prefilter.
- Plastic impeller. No metal components in contact with water.
- AISI-316 stainless steel nuts and bolts.
- High quality, high performance mechanical seal even suitable for use with sea water.
- Mains supply of 230/400 or 400/690 V.



# KIVU® range for facilities of up to 130 m<sup>3</sup>

KIVU pumps of 3 HP, 4 HP and 5.5 HP  
Ideal for pools in hotels, residential communities, aquariums and seawater leisure parks.

- Plastic 1500 rpm self-priming pump.
- Low noise level: up to 59 dBA.
- Hydraulic efficiency of 78% (compliant with standard ISO 9906).
- Separate 8 litre prefilter. The pump can be sold without a prefilter.



KIVU® 3 HP

KIVU® 4 HP

KIVU® 5.5 HP

Mains supp. 230/400 V

66047 (with prefilter)

66047-0890 (without prefilter)

66048 (with prefilter)

66048-0890 (without prefilter)

66049 (with prefilter)

66049-0890 (without prefilter)

Ten. alim. 400/690 V

63042 (with prefilter)

63042-0890 (without prefilter)

63043 (with prefilter)

63043-0890 (without prefilter)

63044 (with prefilter)

63044-0890 (without prefilter)

Size (width x height x depth)

882 x 610 x 460 mm

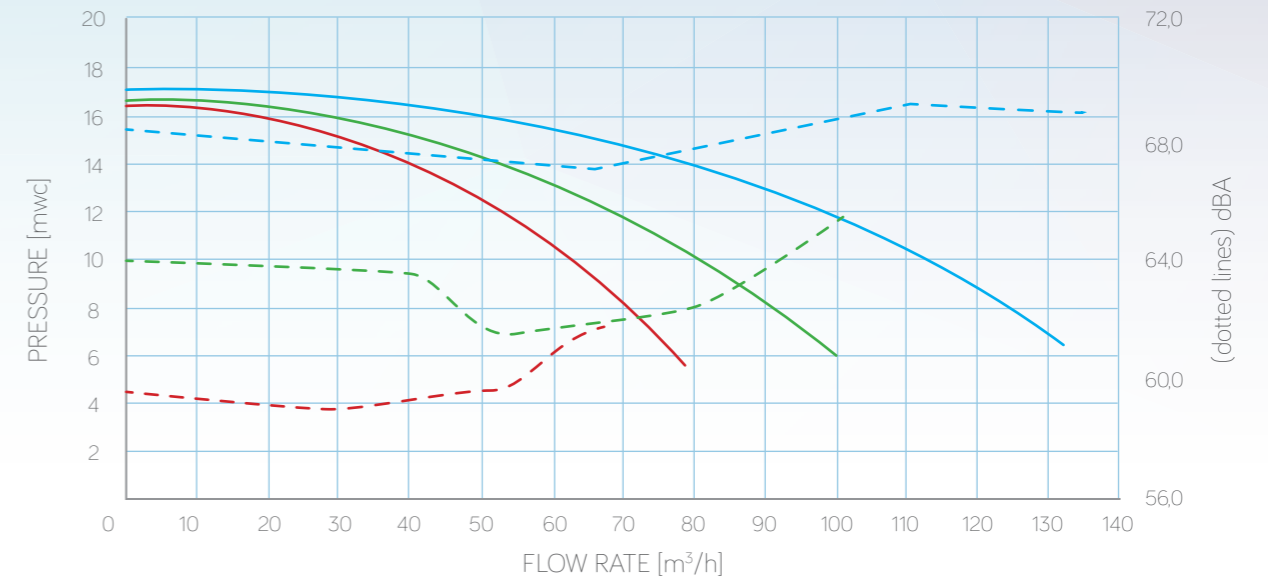
882 x 610 x 460 mm

906 x 610 x 460 mm

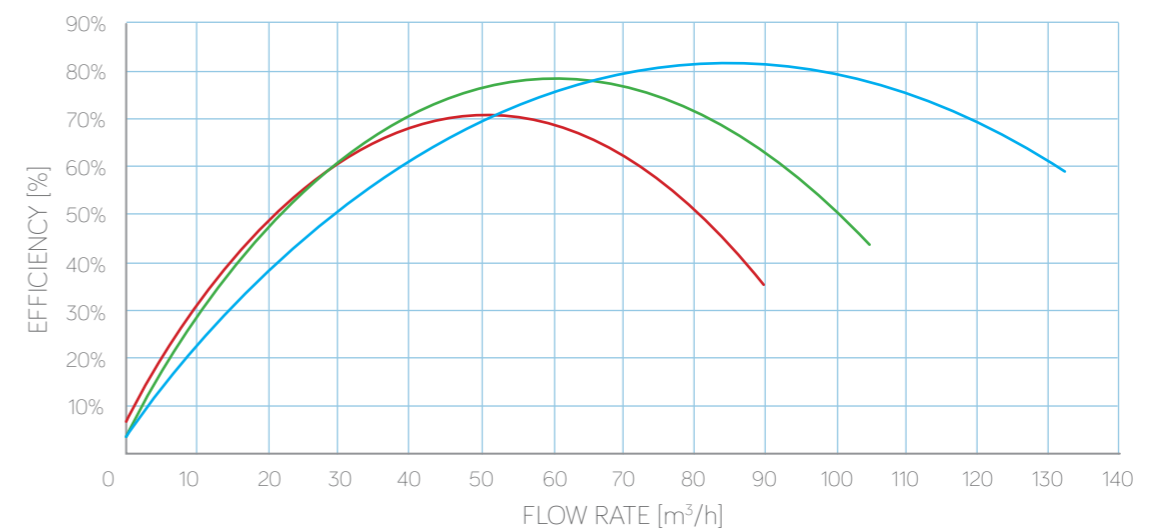


The KIVU® pump's high hydraulic efficiency means that pumps in the range of 3 to 5.5 HP\* will pay for themselves in less than **4 YEARS**.

Graph showing pressure/flow rate of KIVU® pumps without prefilter



Graph showing hydraulic efficiency/flow rate of KIVU® pumps without prefilter.



● KIVU® 3 HP ● KIVU® 4 HP ● KIVU® 5.5 HP

\*Comparative study conducted using a self-priming 1500 rpm/35 HP KIVU® pump and a 1500 rpm/35 HP centrifuge pump. Average running time: 15 hours/day. Running costs: €0.14 kW/h.

# KIVU® range for facilities of up to 280 m<sup>3</sup>

KIVU pumps of 7.5 HP, 10 HP and 15 HP  
Ideal for public pools, Olympic pools, water parks, aquariums, fish farms and seawater facilities.

- Plastic 1500 rpm self-priming pump.
- Low noise level: up to 66 dBA.
- Hydraulic efficiency of 85% (compliant with standard ISO 9906).
- Separate 25 litre prefilter. The pump can be sold without a prefilter.



KIVU® 7,5 HP

KIVU® 10 HP

KIVU® 15 HP

Mains supp. 230/400 V

56633 (with prefilter)

56635 (with prefilter)

56638 (with prefilter)

56633-0890 (without prefilter)

56635-0890 (without prefilter)

56638-0890 (without prefilter)

Ten. alim. 400/690V

56634 (with prefilter)

56637 (with prefilter)

56639 (with prefilter)

56634-0890 (without prefilter)

56637-0890 (without prefilter)

56639-0890 (without prefilter)

Size (width x height x depth)

1215 x 688 x 550 cm

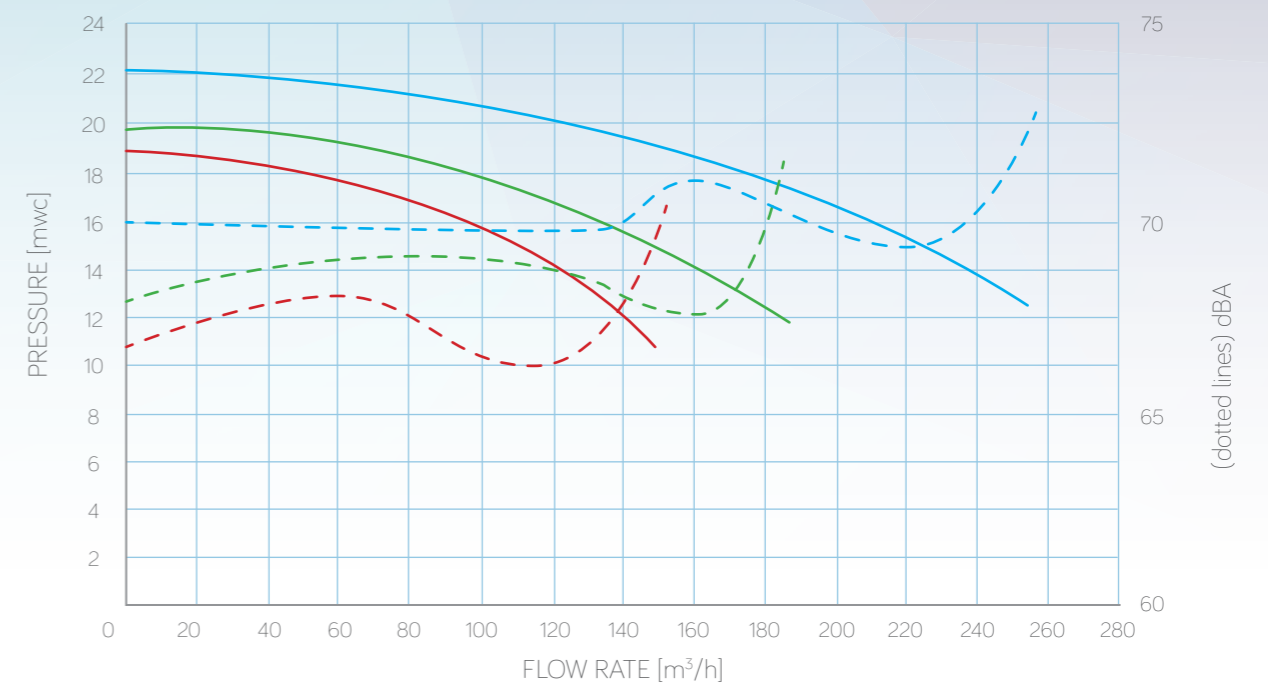
1250 x 688 x 550 cm

1315 x 688 x 550 cm

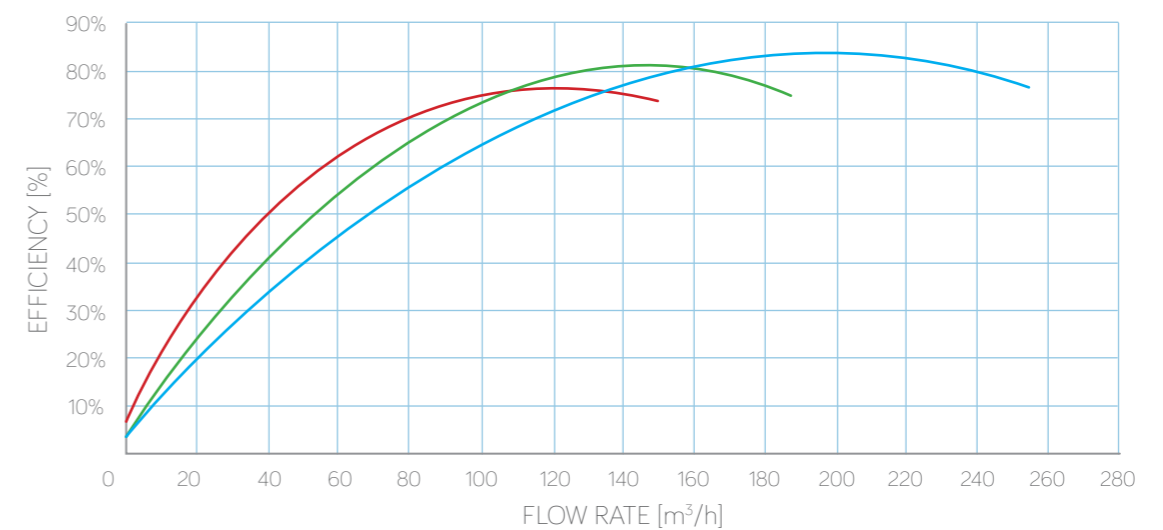


The KIVU® pump's high hydraulic efficiency means that pumps in the range of 7.5 to 15 HP will pay for themselves in less than **1 YEAR**.

Graph showing pressure/flow rate of KIVU® pumps without prefilter



Graph showing hydraulic efficiency/flow rate of KIVU® pumps without prefilter.



○ KIVU® 7,5 HP ○ KIVU® 10 HP ○ KIVU® 15 HP

\*Comparative study conducted using a self-priming 1500 rpm/10 HP KIVU® pump and a 3,000 rpm/15 HP centrifuge pump. Average running time: 15 hours/day. Running costs: €0.14 kW/h.



**ASTRALPOOL** 

[www.astralpool.com](http://www.astralpool.com)

© 2015 Fluidra S.A.