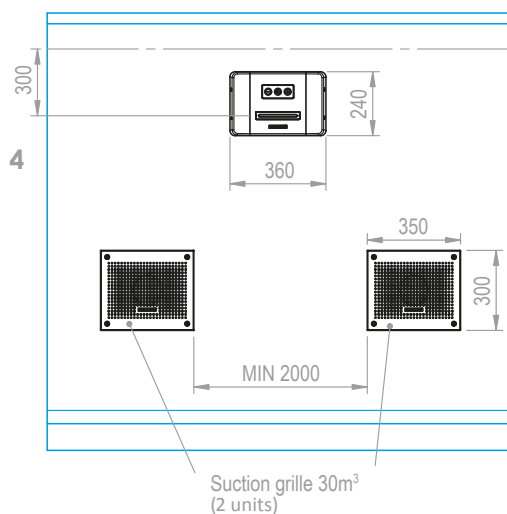




Countercurrent swimming unit

# Basic ND

The water outlet through side slats brings innovation to countercurrent units



### Kit made up of:

- Countercurrent swimming unit with polished AISI 316 stainless steel front cover.
- Illuminated piezoelectric push button.
- Air-water return nozzle, max. flow rate of 50 m<sup>3</sup>/h and built-in suction system.
- Two suction grilles with a capacity of 30 m<sup>3</sup>/h made of polished AISI 316 stainless steel.
- 5.5 cv pump.
- Flow rate of 50 m<sup>3</sup>/h.
- Power control cabinet.

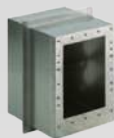
### Basic ND

Code	Description
65498	Basic ND countercurrent unit for concrete pools
66044	Basic ND countercurrent unit for liner pools

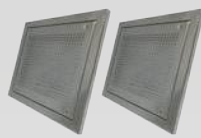
## Components included



Nozzle assembly



AISI 316 stainless steel housing



Two suction grilles with a capacity of 30 m<sup>3</sup>/h



5.5 cv pump



Control box